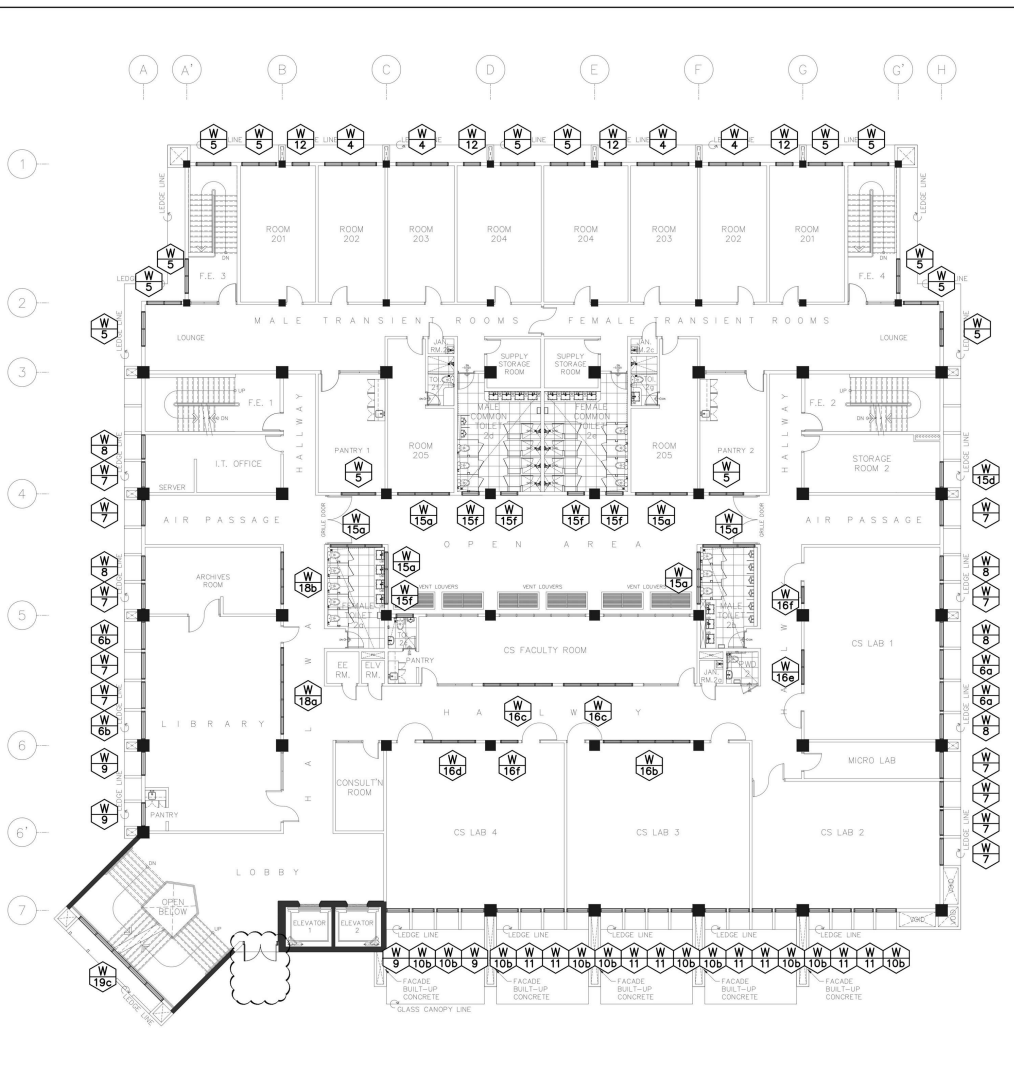
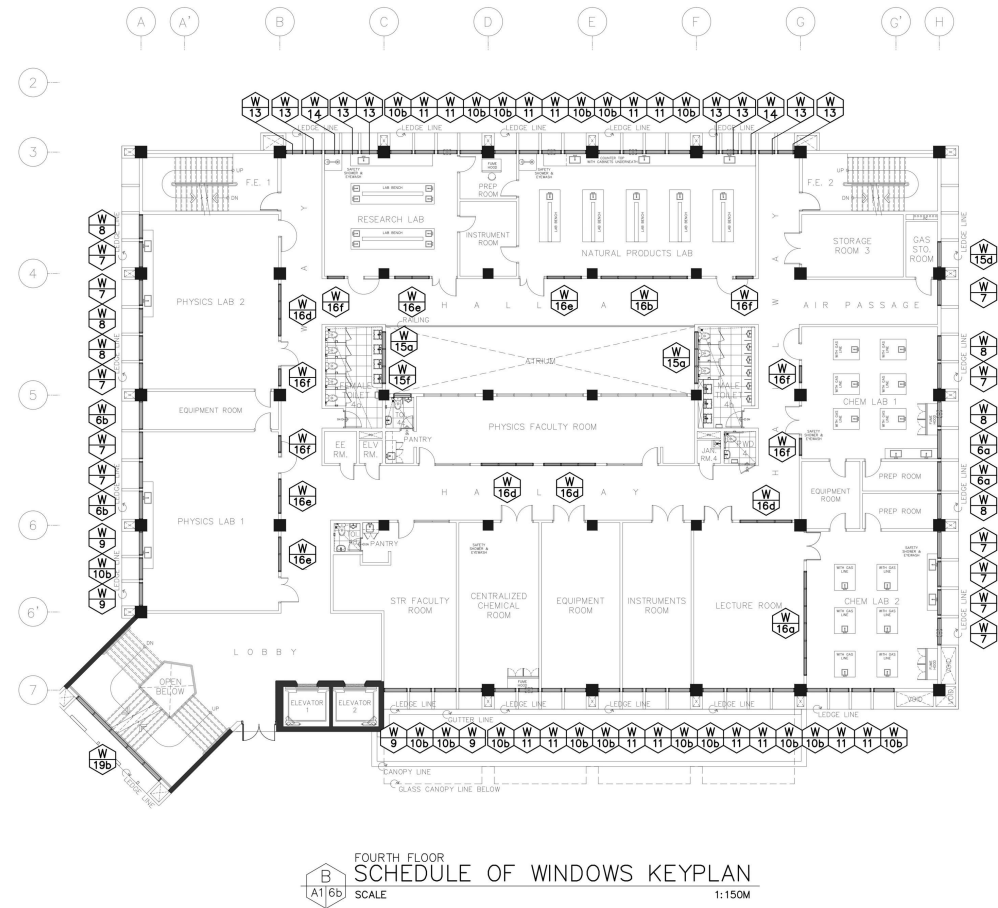
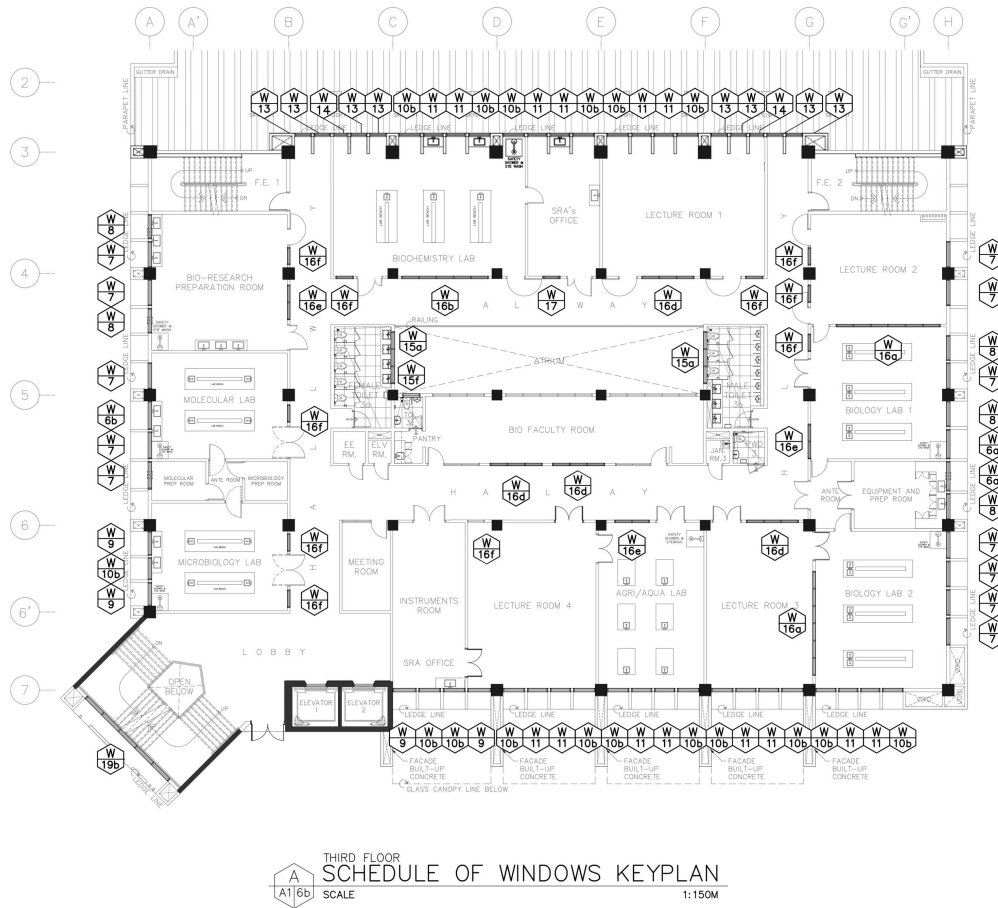







A
A1-6a
GROUND FLOOR
SCHEDULE OF WINDOWS KEYPLAN
SCALE 1:150M

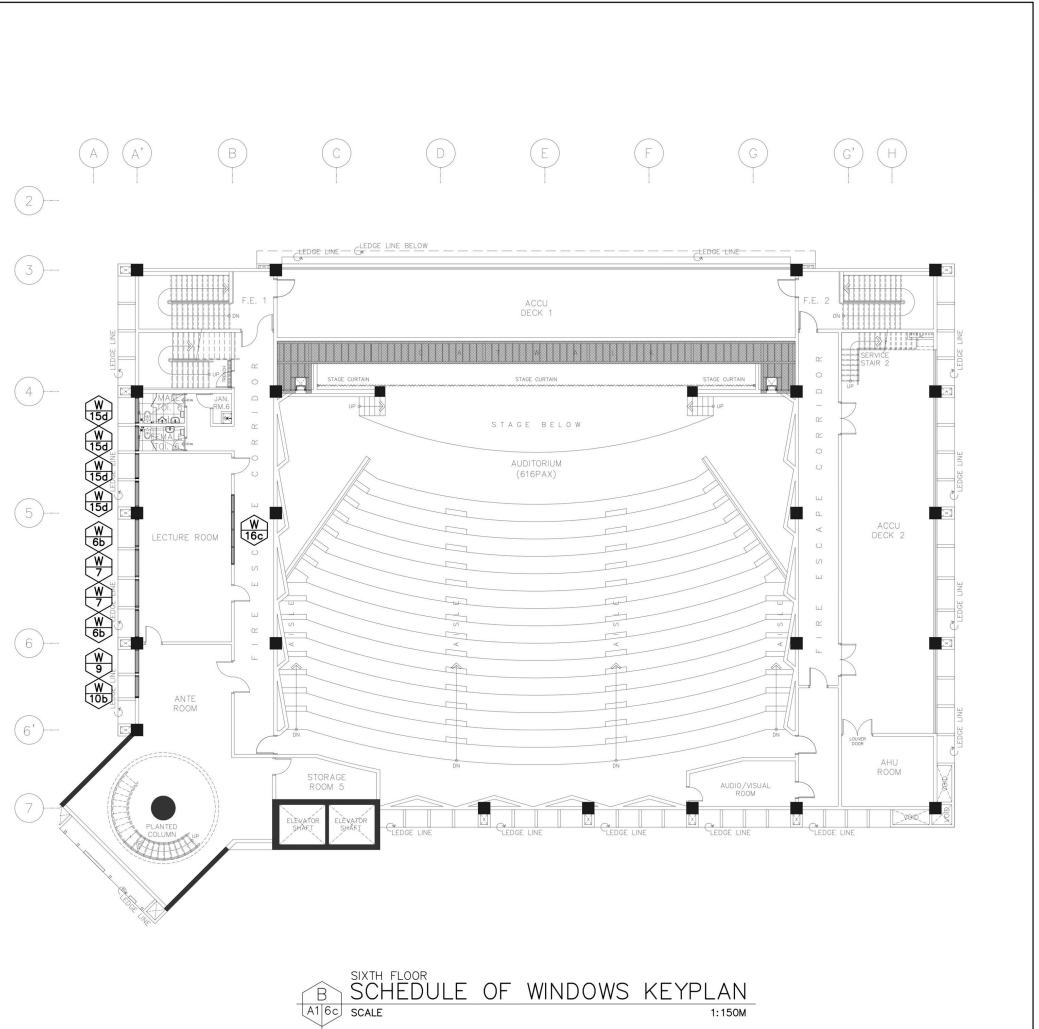
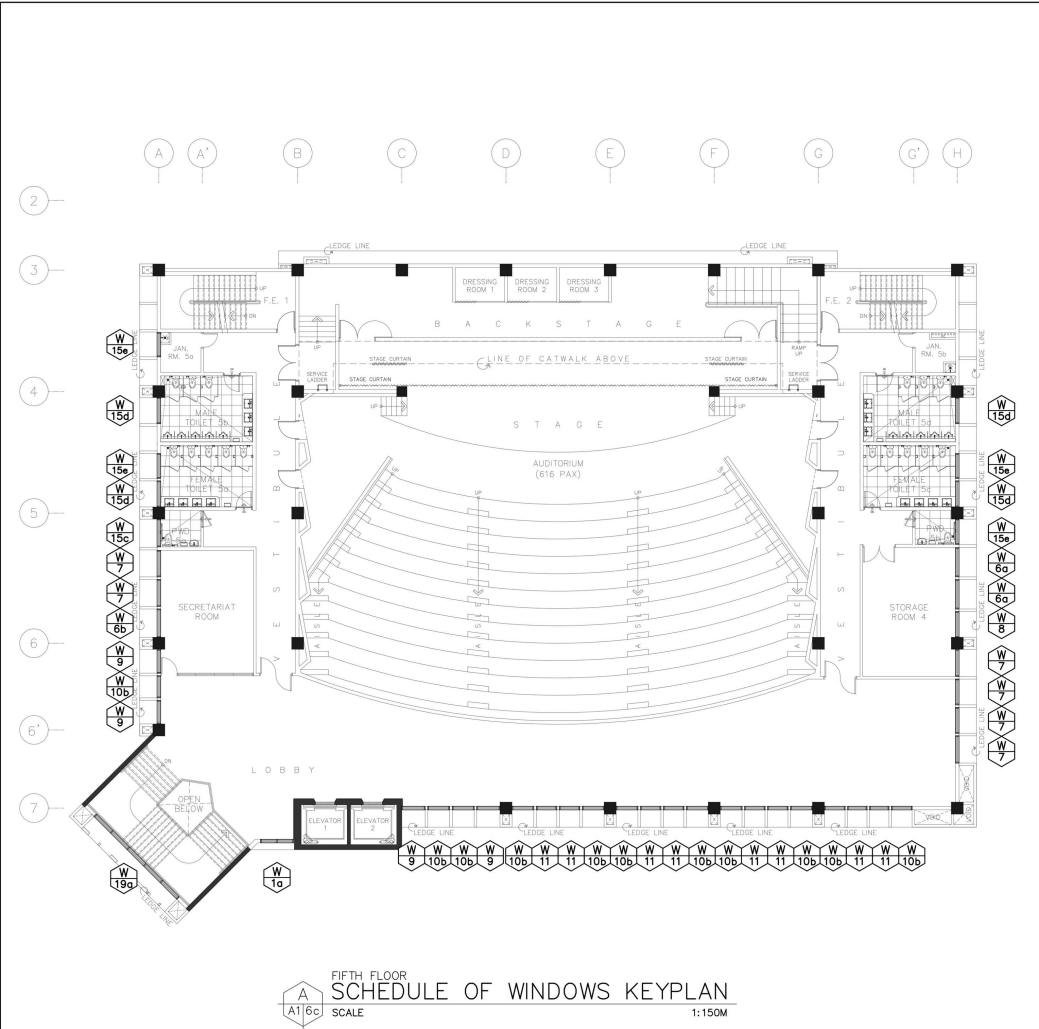







B
A1-6a
SECOND FLOOR
SCHEDULE OF WINDOWS KEYPLAN
SCALE 1:150M

CONSULTANT:	PRINCIPAL ARCHITECT:	DESIGN ARCHITECT:	PROJECT TITLE:	OWNER:	APPROVED BY:	SHEET CONTENTS:	REVISION:	PROJECT NO.:	SHEET NO.:
ARCE•BAILON•ARCE ARCHITECTS • ENGINEERS • CONSULTANTS 14 SCOUT BORROMEO STREET, SOUTH TRIANGLE, QUEZON CITY, TRUNKLINE: 555202 FAX NO: 5551080 www.arcebailonarce.com	 MARIANO S. ARCE, JR., fup	 MA. NINA B. ARCE, fup	CONSTRUCTION OF THE ACADEMIC BUILDING FOR SENIOR HIGH PROGRAM	PHILIPPINE SCIENCE HIGH SCHOOL MAIN CAMPUS	 LAWRENCE V. MADRIGA RCO DIRECTOR II	GRD. R.L. SCHEDULE OF WINDOWS KEYPLAN 2ND FLR. SCHEDULE OF WINDOWS KEYPLAN FEB 2022 *WINDOW W-1a ADDED @ 2ND FLR.	DESIGNED BY: MSJA CAD: EJO CHECKED BY: MSJA DATE: APRIL 2018	17-06	A1-6a
REG. NO. 4844 PIR NO. 386567 TIN 129-343-871 DATE 04/07/17 GC TIN 111-535-735 DATE 01/10/17 GC	REG. NO. 4970 PIR NO. 386567 TIN 111-535-735 DATE 01/10/17 GC	LOCATION: Agham Road, Diliman, Quezon City							



CONSULTANT:		PRINCIPAL ARCHITECT:		DESIGN ARCHITECT:		PROJECT TITLE:		OWNER:		APPROVED BY:		SHEET CONTENTS:		REVISION:		PROJECT NO.:		SHEET NO.:	
<div><div>ARCE • BAILON • ARCE ARCHITECTS • ENGINEERS • CONSULTANTS 14 SCOUT BORMORE STREET, SOUTH TRIANGLE, QUEZON CITY, TRINUKLINE - 352232 FAX NO. - 3351080 www.arcebailon.com</div></div>		<div><div>MARIANO S. ARCE, JR., fuop</div></div>		<div><div>MA, NINA B. ARCE, fuop</div></div>		CONSTRUCTION OF THE ACADEMIC BUILDING FOR SENIOR HIGH PROGRAM		<div><div>PHILIPPINE SCIENCE HIGH SCHOOL MAIN CAMPUS</div></div>		<div><div>LAWRENCE Y. MADRIGA GDD DIRECTOR II</div></div>		3RD FLR. SCHEDULE OF WINDOWS KEYPLAN 4TH FLR. SCHEDULE OF WINDOWS KEYPLAN				17-06		A1-6b	
REG. NO. 0484 PFR NO. 306547 HSD NO. 4975 PFR NO. 386623 RL 139-34321 DATE 01/10/09 RL 111-535-276 DATE 01/10/2009		LOCATION: Agnam Road, Diliman, Quezon City										DESIGNED BY: JMA CAD: JMA CHECKED BY: JMA DATE: APRIL 2018							



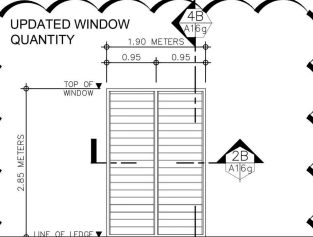
CONSULTANT:	PRINCIPAL ARCHITECT:	DESIGN ARCHITECT:	PROJECT TITLE:	OWNER:	APPROVED BY:	SHEET CONTENTS:	REVISION:	PROJECT NO.:	SHEET NO.:
 ARCE•BAILON•ARCE ARCHITECTS •ENGINEERS •CONSULTANTS 14 SCOUT BORROMEO STREET, SOUTH TRIANGLE, QUEZON CITY, TRINIDAD. 055033 FAX NO.: 3551080 www.arcebailonarce.com	 MARIANO S. ARCE, JR., fup	 MA. NINA B. ARCE, fup	CONSTRUCTION OF THE ACADEMIC BUILDING FOR SENIOR HIGH PROGRAM	 PHILIPPINE SCIENCE HIGH SCHOOL MAIN CAMPUS	 LAWRENCE V. MADRIAGA RCD DIRECTOR II	8TH R.L. SCHEDULE OF WINDOWS KEYPLAN 8TH R.L. SCHEDULE OF WINDOWS KEYPLAN		17-06	A1-6c
REG. NO. 4844 PTR NO. 3865677 REG. NO. 4970 PTR NO. 3865677 TIN 129-343-871 DATE 04/01/17 QC TIN 111-535-735 DATE 01/10/17 QC			LOCATION: Agham Road, Diliman, Quezon City			DESIGNED BY: MSJ CAD: EJO CHECKED BY: MSJ DATE: APRIL 2018			

WINDOW SPECIFICATION
FOR WINDOWS 1a TO 15f

JALOUSIE WINDOW

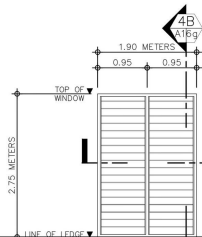
SPECIFICATIONS:

SHALL BE 6MM THICK X 152MM WIDTH ANNEALED REFLECTIVE "SMOKE GREY" GLASS LOUVER BLADES; JALOUSIE FRAMING SHALL BE MADE FROM POLYPROPYLENE MECHANISM THAT WILL BREAK AND FLEXIBLE, WITH EPDM RUBBER FOR TIGHTER SEALING IN BETWEEN BLADES AND SINGLE CONTROL MECHANISM, COMPLETE WITH HARDWARE AND ACCESSORIES. MAIN FRAMING SHALL BE TUBULAR ALUMINUM FRAME IN POWDER COATED FINISH.

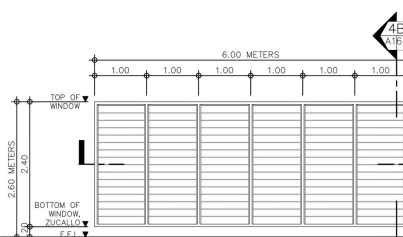
UPDATED WINDOW
QUANTITYW 1a JALOUSIE WINDOW
SCALE 1:50 WTS

REQUIRED: 1 SET COMPLETE
LOCATION: 5TH FLOOR – ELEVATOR LOBBY

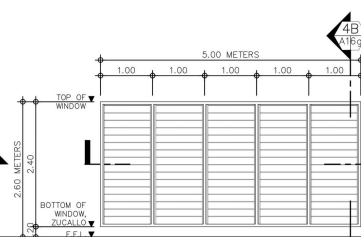
NOTE: SEE OUTLINE SPECIFICATION FOR JALOUSIE WINDOWS

W 1b JALOUSIE WINDOW
SCALE 1:50 WTS

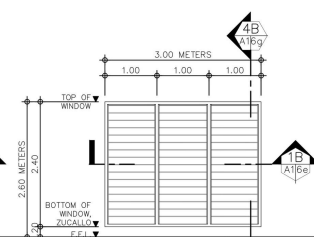
REQUIRED: 1 SET COMPLETE
LOCATION: GROUND FLOOR – ELEVATOR LOBBY
NOTE: SEE OUTLINE SPECIFICATION FOR JALOUSIE WINDOWS

W 2a JALOUSIE WINDOW
SCALE 1:50 WTS

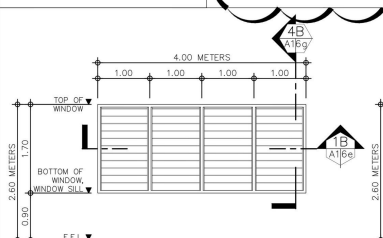
REQUIRED: 4 SETS COMPLETE
LOCATION: GROUND FLOOR – DINING HALL
NOTE: SEE OUTLINE SPECIFICATION FOR JALOUSIE WINDOWS

W 2b JALOUSIE WINDOW
SCALE 1:50 WTS

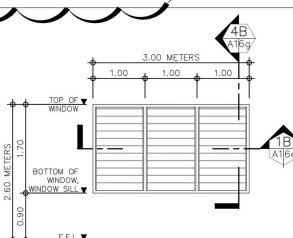
REQUIRED: 2 SETS COMPLETE
LOCATION: GROUND FLOOR – STAFF & FACULTY DINING ROOM
NOTE: SEE OUTLINE SPECIFICATION FOR JALOUSIE WINDOWS

W 2c JALOUSIE WINDOW
SCALE 1:50 WTS

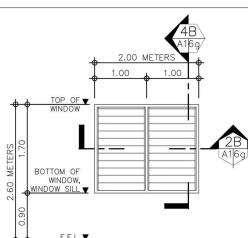
REQUIRED: 2 SETS COMPLETE
LOCATION: GROUND FLOOR – DINING HALL, DISHWASHING ROOM
NOTE: SEE OUTLINE SPECIFICATION FOR JALOUSIE WINDOWS

W 3a JALOUSIE WINDOW
SCALE 1:50 WTS

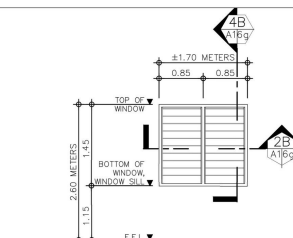
REQUIRED: 1 SET COMPLETE
LOCATION: GROUND FLOOR – FOOD SCIENCE LAB
NOTE: SEE OUTLINE SPECIFICATION FOR JALOUSIE WINDOWS

W 4a JALOUSIE WINDOW
SCALE 1:50 WTS

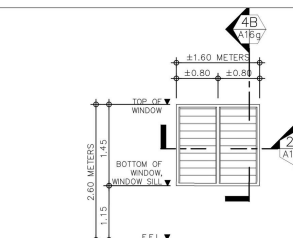
REQUIRED: 5 SETS COMPLETE
LOCATION: GROUND FLOOR – COP OFFICE
2ND FLOOR (MALE & FEMALE TRANSIENT) – ROOM 202 & 203
NOTE: SEE OUTLINE SPECIFICATION FOR JALOUSIE WINDOWS

W 5a JALOUSIE WINDOW
SCALE 1:50 WTS

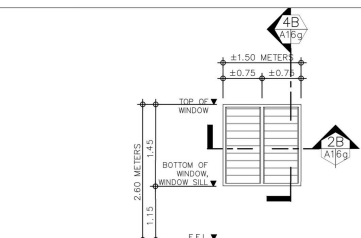
REQUIRED: 18 SETS COMPLETE
LOCATION: GROUND FLOOR – KITCHEN 2, FIRE EXIT 3 & 4
2ND FLOOR (MALE & FEMALE TRANSIENT) – ROOM 201 & 204, LOUNGE, PANTRY 1 & 2, FIRE EXIT 3 & 4
NOTE: SEE OUTLINE SPECIFICATION FOR JALOUSIE WINDOWS

W 6a JALOUSIE WINDOW
SCALE 1:50 WTS

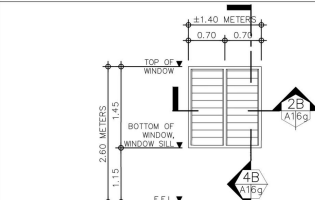
REQUIRED: 8 SETS COMPLETE
LOCATION: 2ND FLOOR – CS LAB 1
3RD FLOOR – BIOLOGY LAB 1, EQUIPMENT & PREP ROOM
4TH FLOOR – CHEM LAB 1, PREP ROOM
5TH FLOOR – STORAGE ROOM 4
NOTE: SEE OUTLINE SPECIFICATION FOR JALOUSIE WINDOWS

W 6b JALOUSIE WINDOW
SCALE 1:50 WTS

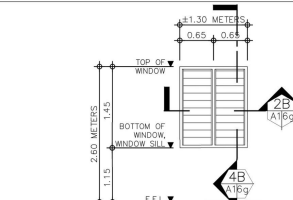
REQUIRED: 8 SETS COMPLETE
LOCATION: 2ND FLOOR – LIBRARY
3RD FLOOR – MOLECULAR LAB,
4TH FLOOR – PHYSICS LAB 1, EQUIPMENT RM
5TH FLOOR – SECRETARIAT ROOM
NOTE: SEE OUTLINE SPECIFICATION FOR JALOUSIE WINDOWS

W 7a JALOUSIE WINDOW
SCALE 1:50 WTS

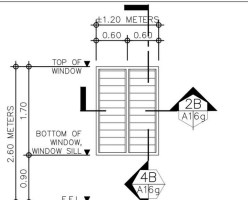
REQUIRED: 42 SETS COMPLETE
LOCATION: 2ND FLOOR – CS LAB 1, MICRO LAB, I.T. OFFICE, LIBRARY, ARCHIVES ROOM, AIR PASSAGE
3RD FLOOR – BIOLOGY LAB 1 & 2, LECTURE RM 2, MOLECULAR LAB, BIO-RESEARCH PREPARATION RM, PREP RM
4TH FLOOR – CHEM LAB 1 & 2, PHYSICS LAB 1 & 2, AIR PASSAGE
5TH FLOOR – STORAGE ROOM 4
NOTE: SEE OUTLINE SPECIFICATION FOR JALOUSIE WINDOWS

W 8a JALOUSIE WINDOW
SCALE 1:50 WTS

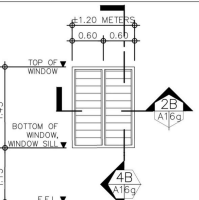
REQUIRED: 17 SETS COMPLETE
LOCATION: 2ND FLOOR – CS LAB 1, ARCHIVES ROOM, I.T. OFFICE
3RD FLOOR – BIOLOGY LAB 1, EQUIPMENT & PREP RM, BIO-RESEARCH PREP RM
4TH FLOOR – PHYSICS LAB 2, CHEM LAB 1 & 2, PREP RM
5TH FLOOR – STORAGE RM 4
NOTE: SEE OUTLINE SPECIFICATION FOR JALOUSIE WINDOWS

W 9a JALOUSIE WINDOW
SCALE 1:50 WTS

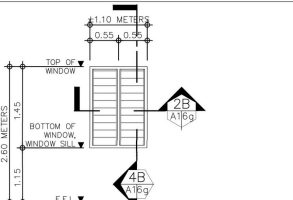
REQUIRED: 17 SETS COMPLETE
LOCATION: 2ND FLOOR – CS LAB 4, LIBRARY
3RD FLOOR – LECTURE RM 4, MICROBIOLOGY LAB, INSTRUMENTS RM
4TH FLOOR – PHYSICS LAB 1, STR FACULTY RM, CENTRALIZED CHEMICAL RM
5TH FLOOR – SECRETARIAT RM, LOBBY
6TH FLOOR – NEAR ANTE ROOM
NOTE: SEE OUTLINE SPECIFICATION FOR JALOUSIE WINDOWS

W 10a JALOUSIE WINDOW
SCALE 1:50 WTS

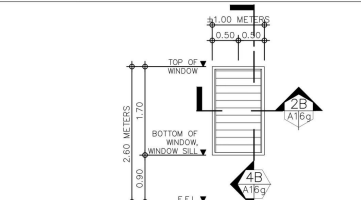
REQUIRED: 1 SET COMPLETE
LOCATION: GROUND FLOOR – ENTRY 1
NOTE: SEE OUTLINE SPECIFICATION FOR JALOUSIE WINDOWS

W 10b JALOUSIE WINDOW
SCALE 1:50 WTS

REQUIRED: 56 SETS COMPLETE
LOCATION: GROUND FLOOR – ENTRY 1
2ND FLOOR – OFFICE OF TECHNICIAN, CS LAB 2, 3 & 4
3RD FLOOR – MICROBIOLOGY LAB, LECTURE RM 1, 3 & 4, AGR/AQUA LAB, BIOLOGY LAB 2, INSTRUMENTS RM, BIOCHEMISTRY LAB, SRA'S OFFICE
4TH FLOOR – PHYSICS LAB 1 & 2, STR FACULTY, CENTRALIZED CHEMICAL RM, EQUIPMENT RM, INSTRUMENTS RM, LECTURE RM, CHEM LAB 2, RESEARCH LAB, PREP RM, NATURAL PRODUCTS LAB
6TH FLOOR – NEAR ANTE ROOM
NOTE: SEE OUTLINE SPECIFICATION FOR JALOUSIE WINDOWS

W 11a JALOUSIE WINDOW
SCALE 1:50 WTS

REQUIRED: 44 SETS COMPLETE
LOCATION: 2ND FLOOR – CS LAB 2, 3 & 4
3RD FLOOR – LECTURE ROOM 1, 3 & 4, AGR/AQUA LAB, BIOLOGY LAB 2, BIOCHEMISTRY LAB, SRA'S OFFICE
4TH FLOOR – RESEARCH LAB, NATURAL PRODUCTS LAB, CHEM LAB 2, INSTRUMENTS RM, EQUIPMENT RM, CENTRALIZED EQPT RM, LECTURE RM
5TH FLOOR – LOBBY
NOTE: SEE OUTLINE SPECIFICATION FOR JALOUSIE WINDOWS

W 12a JALOUSIE WINDOW
SCALE 1:50 WTS

REQUIRED: 6 SETS COMPLETE
LOCATION: GROUND FLOOR – KITCHEN 1
2ND FLOOR (MALE & FEMALE TRANSIENT) – ROOM 201 & 204
NOTE: SEE OUTLINE SPECIFICATION FOR JALOUSIE WINDOWS

A 16d SCHEDULE OF WINDOWS
SCALE 1:50M

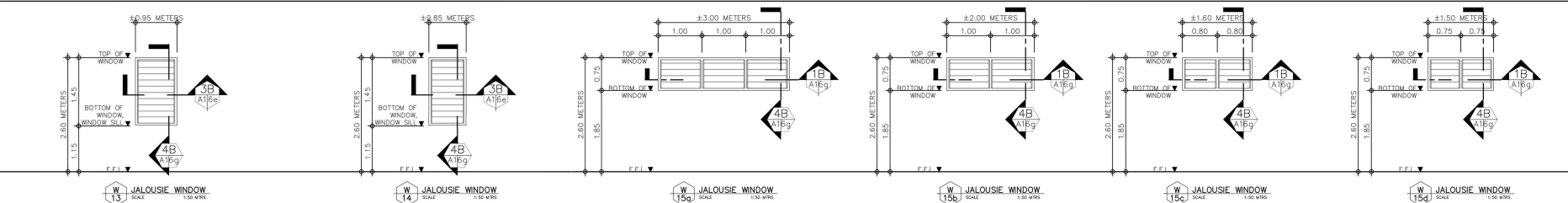
CONSULTANT:	PRINCIPAL ARCHITECT:	DESIGN ARCHITECT:	PROJECT TITLE:	OWNER:	APPROVED BY:	SHEET CONTENTS:	REVISION:	PROJECT NO.:	SHEET NO.:
ARCE•BAILON•ARCE ARCHITECTS•ENGINEERS•CONSULTANTS 14 SCOUT BORNEO STREET, SOUTH TRIANGLE, QUEZON CITY. TEL: 091-3553333 FAX: 091-3551080 www.arcebailonarce.com	MARIANO S. ARCE, JR., fup	MA. NINA B. ARCE, fup	CONSTRUCTION OF THE ACADEMIC BUILDING FOR SENIOR HIGH PROGRAM	PHILIPPINE SCIENCE HIGH SCHOOL MAIN CAMPUS	LAWRENCE V. MADRAGA REG. DIRECTOR II	SCHEDULE OF WINDOWS WINDOW SPECIFICATIONS	FEB 2022 *WINDOW W-1a ADDED @ 2ND FLR	17-06	A1-6d
REG. NO. 4844 PIR NO. 386567 REG. NO. 4970 PIR NO. 3865673 TIN 129-343-871 DATE 04/01/17 QC TIN 111-535-735 DATE 01/10/17 QC			LOCATION: Agham Road, Diliman, Quezon City			DESIGNED BY: MSJA CAD: EJO CHECKED BY: MSJA DATE: APRIL 2018			

WINDOW SPECIFICATION FOR WINDOWS 1a to 15f

JALOUSIE WINDOW

SPECIFICATIONS:

SHALL BE 6MM THICK X 152MM WIDTH ANNEALED REFLECTIVE "SMOKE GREY" GLASS LOUVER BLADES, JALOUSIE FRAMING SHALL BE MADE FROM POLYPROPYLENE MECHANISM THAT WILL BREAK AND FLEXIBLE, WITH EPDM RUBBER FOR TIGHTER SEALING IN BETWEEN BLADES AND SINGLE CONTROL MECHANISM, COMPLETE WITH HARDWARE AND ACCESSORIES, MAIN FRAMING SHALL BE TUBULAR ALUMINUM FRAME IN POWDER COATED FINISH.



REQUIRED: 16 SETS COMPLETE	REQUIRED: 4 SETS COMPLETE	REQUIRED: 10 SETS COMPLETE	REQUIRED: 2 SETS COMPLETE	REQUIRED: 1 SET COMPLETE	REQUIRED: 10 SETS COMPLETE
LOCATION: 3RD FLOOR – LECTURE ROOM 1, BIOCHEMISTRY LAB, HALLWAY NEAR FIRE EXIT 1 & 2 4TH FLOOR – RESEARCH LAB, NATURAL PRODUCTS LAB, HALLWAY NEAR FIRE EXIT 1 & 2	LOCATION: 3RD FLOOR – BIOCHEMISTRY LAB, LECTURE ROOM 1 4TH FLOOR – RESEARCH LAB, NATURAL PRODUCTS LAB	LOCATION: 2ND FLOOR – FEMALE TOILET 2A, MALE TOILET 2B, ROOM 205 OF MALE & FEMALE TRANSIENT 3RD FLOOR – MALE AND FEMALE TOILET 3a & 3b 4TH FLOOR – MALE AND FEMALE TOILET 4a & 4b	LOCATION: GROUND FLOOR – MALE & FEMALE TOILET 1A & 1B,	LOCATION: 5TH FLOOR – PWD 5A NOTE: SEE OUTLINE SPECIFICATION FOR JALOUSIE WINDOWS	LOCATION: 2ND FLOOR – STORAGE ROOM 2 4TH FLOOR – GAS STORAGE ROOM 5TH FLOOR – FEMALE TOILET 5A & 5C, MALE TOILET 5B & 5D 6TH FLOOR – MALE & FEMALE TOILET 6, TELESCOPE STORAGE RM NOTE: SEE OUTLINE SPECIFICATION FOR JALOUSIE WINDOWS
NOTE: SEE OUTLINE SPECIFICATION FOR JALOUSIE WINDOWS	NOTE: SEE OUTLINE SPECIFICATION FOR JALOUSIE WINDOWS	NOTE: SEE OUTLINE SPECIFICATION FOR JALOUSIE WINDOWS	NOTE: SEE OUTLINE SPECIFICATION FOR JALOUSIE WINDOWS		

WINDOW SPECIFICATION FOR WINDOWS 16a TO 16f

ALUMINUM FRAMED FIXED GLASS PANELS WITH JALOUSIE TRANSOM 1

SPECIFICATIONS:

SHALL BE 6MM THICK, FIXED ANNEALED CLEAR GLASS PANELS ON A TUBULAR TYPE ALUMINUM FRAMING SYSTEM IN POWDER-COATED FINISH WITH JALOUSIE TRANSOM MADE FROM 6MM THICK X 152MM WIDTH ANNEALED REFLECTIVE "SMOKE GREY" GLASS LOUVER BLADES, JALOUSIE FRAMING SHALL BE MADE FROM POLYPROPYLENE MECHANISM THAT WILL BREAK AND FLEXIBLE, WITH EPDM RUBBER FOR TIGHTER SEALING IN BETWEEN BLADES AND SINGLE CONTROL MECHANISM, COMPLETE WITH HARDWARE AND ACCESSORIES, FOLLOW MANUFACTURER'S STANDARD SIZES AND THICKNESS, SUBMIT POWDER COATING SWATCHES AND GLASS SAMPLE FOR ARCHITECT'S APPROVAL.

NOTE: FOR WINDOWS W-16a TO 16c AND W-16e TO 16f

ALUMINUM FRAMED FIXED GLASS PANELS WITH JALOUSIE TRANSOM 2

SPECIFICATIONS:

SHALL BE 6MM THICK, FIXED ANNEALED REFLECTIVE "SMOKE GREY" GLASS PANELS ON A MULLION TYPE ALUMINUM FRAMING SYSTEM IN POWDER-COATED FINISH WITH JALOUSIE TRANSOM MADE FROM 6MM THICK X 152MM WIDTH ANNEALED REFLECTIVE "SMOKE GREY" GLASS LOUVER BLADES, JALOUSIE FRAMING SHALL BE MADE FROM POLYPROPYLENE MECHANISM THAT WILL BREAK AND FLEXIBLE, WITH EPDM RUBBER FOR TIGHTER SEALING IN BETWEEN BLADES AND SINGLE CONTROL MECHANISM, COMPLETE WITH HARDWARE AND ACCESSORIES, FOLLOW MANUFACTURER'S STANDARD SIZES AND THICKNESS, SUBMIT POWDER COATING SWATCHES AND GLASS SAMPLE FOR ARCHITECT'S APPROVAL.

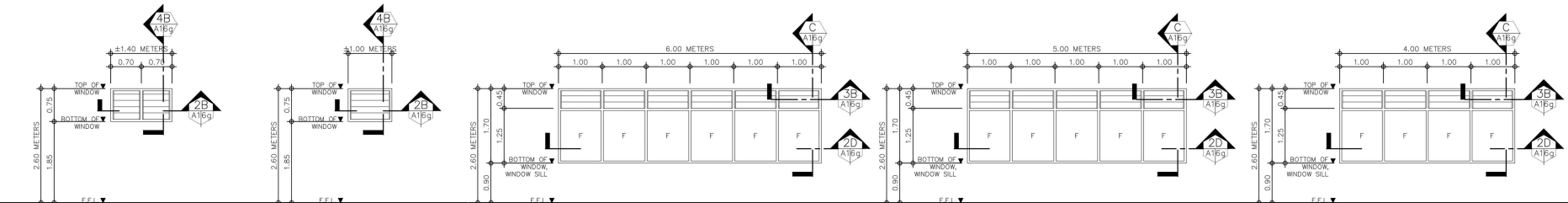
NOTE: FOR WINDOWS W-16d

WINDOW SPECIFICATION FOR WINDOW 17

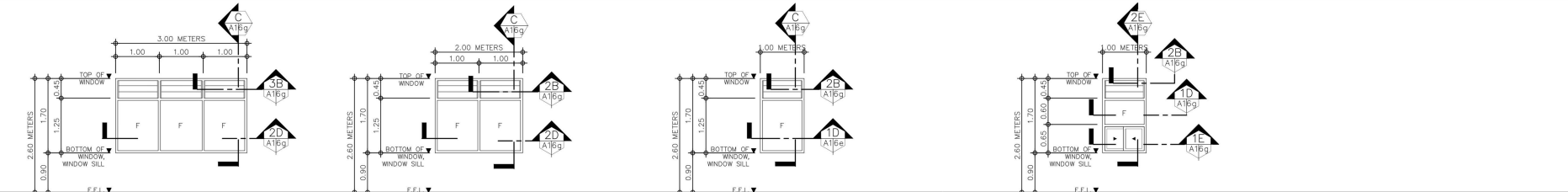
ALUMINUM FIXED GLASS PANELS AND SLIDING WINDOWS WITH JALOUSIE TRANSOM

SPECIFICATIONS:

SHALL BE 6MM THICK, FIXED ANNEALED REFLECTIVE "SMOKE GREY" FIXED GLASS PANELS WITH SLIDING WINDOWS ON A MULLION TYPE ALUMINUM FRAMING SYSTEM IN POWDER-COATED FINISH WITH JALOUSIE TRANSOM MADE FROM 6MM THICK X 152MM WIDTH ANNEALED REFLECTIVE "SMOKE GREY" GLASS LOUVER BLADES, JALOUSIE FRAMING SHALL BE MADE FROM POLYPROPYLENE MECHANISM THAT WILL BREAK AND FLEXIBLE, WITH EPDM RUBBER FOR TIGHTER SEALING IN BETWEEN BLADES AND SINGLE CONTROL MECHANISM, COMPLETE WITH HARDWARE AND ACCESSORIES, FOLLOW MANUFACTURER'S STANDARD SIZES AND THICKNESS, SUBMIT POWDER COATING SWATCHES AND GLASS SAMPLE FOR ARCHITECT'S APPROVAL.



REQUIRED: 4 SETS COMPLETE	REQUIRED: 8 SETS COMPLETE	REQUIRED: 3 SETS COMPLETE	REQUIRED: 3 SETS COMPLETE	REQUIRED: 3 SETS COMPLETE
LOCATION: 5TH FLOOR – FEMALE TOILET 5A & 5C, MALE TOILET 5B, PWD 5B, JANITOR'S RM 5A	LOCATION: GROUND FLOOR – PWD TOILET 1 2ND FLOOR – CS FACILITY RM TOILET 2C, COMMON TOILET 2D & 2E 3RD FLOOR – BIO FACILITY RM TOILET 3C 4TH FLOOR – PHYSICS FACILITY RM TOILET	LOCATION: 3RD FLOOR – BIOLOGY LAB 1 & 2 4TH FLOOR – CHEM LAB 2	LOCATION: GROUND FLOOR – CS FACILITY RM TOILET 2C, COMMON TOILET 2D & 2E 3RD FLOOR – BIOCHEMISTRY LAB, 4TH FLOOR – NATURAL PRODUCTS LAB	LOCATION: 2ND FLOOR – CS FACILITY RM 6TH FLOOR – LECTURE ROOM
NOTE: SEE OUTLINE SPECIFICATION FOR JALOUSIE WINDOWS	NOTE: SEE OUTLINE SPECIFICATION FOR JALOUSIE WINDOWS	NOTE: SEE OUTLINE SPECIFICATION FOR JALOUSIE WINDOW AND ALUMINUM FRAMED FIXED GLASS PANELS	NOTE: SEE OUTLINE SPECIFICATION FOR JALOUSIE WINDOW AND ALUMINUM FRAMED FIXED GLASS PANELS	NOTE: SEE OUTLINE SPECIFICATION FOR JALOUSIE WINDOW AND ALUMINUM FRAMED FIXED GLASS PANELS



REQUIRED: 10 SETS COMPLETE	REQUIRED: 9 SETS COMPLETE	REQUIRED: 17 SETS COMPLETE	REQUIRED: 1 SET COMPLETE
LOCATION: 2ND FLOOR – CS LAB 4 3RD FLOOR – BIO FACILITY RM, LECTURE RM 1, 3 & 4 4TH FLOOR – PHYSICS LAB 2, LECTURE RM, PHYSICS FACILITY RM	LOCATION: GROUND FLOOR – FOOD SCIENCE LAB 2ND FLOOR – CS LAB 1 3RD FLOOR – BIO FACILITY RM, BIOLOGY LAB 1, BIO-RESEARCH PREP RM 4TH FLOOR – RESEARCH LAB, PHYSICS LAB 1, NATURAL PRODUCTS LAB	LOCATION: 2ND FLOOR – CS LAB 1 & 4 3RD FLOOR – BIOLOGY LAB 1, LECTURE RM 1 & 2, BIOCHEMISTRY LAB, BIO-RESEARCH PREP RM, MOLECULAR LAB, MICROBIOLOGY LAB 4TH FLOOR – PHYSICS LAB 1 & 2, RESEARCH LAB, NATURAL PRODUCTS LAB, CHEM LAB 1	LOCATION: 3RD FLOOR – SRA'S OFFICE NOTE: SEE OUTLINE SPECIFICATION FOR ALUMINUM FRAMED FIXED GLASS PANELS AND SLIDING WINDOWS WITH JALOUSIE TRANSOM
NOTE: SEE OUTLINE SPECIFICATION FOR JALOUSIE WINDOW AND ALUMINUM FRAMED FIXED GLASS PANELS	NOTE: SEE OUTLINE SPECIFICATION FOR JALOUSIE WINDOW AND ALUMINUM FRAMED FIXED GLASS PANELS	NOTE: SEE OUTLINE SPECIFICATION FOR JALOUSIE WINDOW AND ALUMINUM FRAMED FIXED GLASS PANELS	

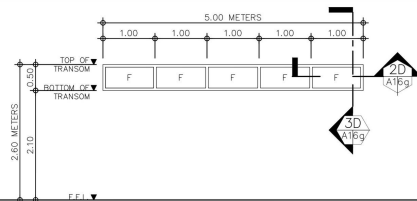
SCHEDULE OF WINDOWS

SCALE 1:50M

CONSULTANT:	PRINCIPAL ARCHITECT:	DESIGN ARCHITECT:	PROJECT TITLE:	OWNER:	APPROVED BY:	SHEET CONTENTS:	REVISION:	PROJECT NO.:	SHEET NO.:
ARCE•BAILON•ARCE ARCHITECTS•ENGINEERS•CONSULTANTS 14 SCOUT BORROWED STREET, SOUTH TRIANGLE, QUEZON CITY. TELEPHONE: 5552353 FAX NO: 5551080 www.arcebailonarce.com	MARIANO S. ARCE, JR., fup	MARIANO S. ARCE, JR., fup	CONSTRUCTION OF THE ACADEMIC BUILDING FOR SENIOR HIGH PROGRAM	PHILIPPINE SCIENCE HIGH SCHOOL MAIN CAMPUS	LAWRENCE V. MADRAGA DIRECTOR II	SCHEDULE OF WINDOWS WINDOW SPECIFICATIONS		17-06	A1-6e
REG. NO. 1844 PIR NO. 3865671 REG. NO. 4970 PIR NO. 3865671 TIN 129-348-871 DATE 04/01/17 QC TIN 111-535-735 DATE 01/01/17 QC			LOCATION: Agham Road, Diliman, Quezon City			DESIGNED BY: MSJA CAD: EJO CHECKED BY: MSJA DATE: APRIL 2018			

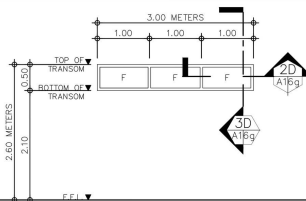
WINDOW SPECIFICATION
FOR WINDOWS 18a TO 18bALUMINUM FRAMED FIXED GLASS TRANSOM
SPECIFICATIONS:

SHALL BE 6MM THICK ANNEALED CLEAR FIXED GLASS TRANSOM ON A MULLION TYPE ALUMINUM FRAMING SYSTEM IN POWDER COATED FINISH. SUBMIT POWDER COATING SWITCHES AND GLASS SAMPLE FOR ARCHITECTS' APPROVAL.



W 18a SCALE 1:50 VIEW

REQUIRED: 1 SET COMPLETE
LOCATION: 2ND FLOOR – LIBRARY
NOTE: SEE OUTLINE SPECIFICATION FOR JALOUSIE WINDOWS



W 18b SCALE 1:50 VIEW

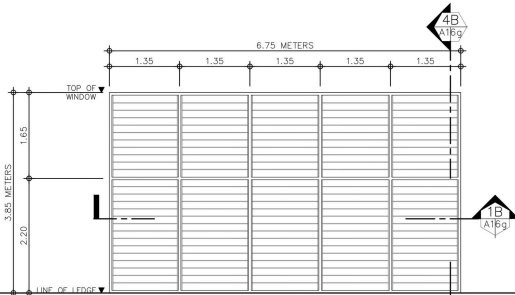
REQUIRED: 1 SET COMPLETE
LOCATION: 2ND FLOOR – ARCHIVES ROOM
NOTE: SEE OUTLINE SPECIFICATION FOR JALOUSIE WINDOWS

WINDOW SPECIFICATION
FOR WINDOW 19a

JALOUSIE WINDOW

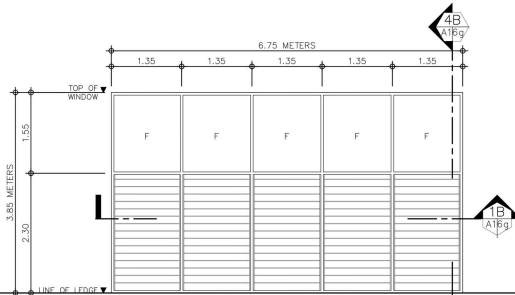
SPECIFICATIONS:

SHALL BE 6MM THICK X 152MM WIDTH ANNEALED REFLECTIVE "SMOKE GREY" GLASS LOUVER BLADES. JALOUSIE FRAMING SHALL BE MADE FROM POLYPROPYLENE MECHANISM THAT WILL BREAK AND FLEXIBLE, WITH EPDM RUBBER FOR TIGHTER SEALING IN BETWEEN BLADES AND SINGLE CONTROL MECHANISM, COMPLETE WITH HARDWARE AND ACCESSORIES. MAIN FRAMING SHALL BE TUBULAR ALUMINUM FRAME IN POWDER COATED FINISH.



W 19a SCALE 1:50 VIEW

REQUIRED: 1 SET COMPLETE
LOCATION: 5TH FLOOR – MAIN STAIRS
NOTE: SEE OUTLINE SPECIFICATION FOR JALOUSIE WINDOW



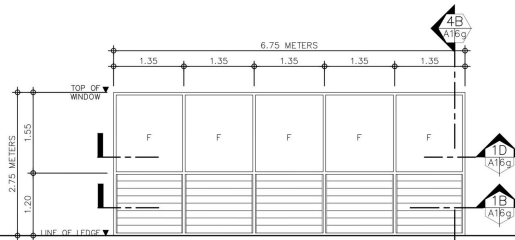
W 19b SCALE 1:50 VIEW

REQUIRED: 2 SETS COMPLETE
LOCATION: 3RD FLOOR & 4TH FLOOR – MAIN STAIRS
NOTE: SEE OUTLINE SPECIFICATION FOR ALUMINUM FRAMED FIXED GLASS PANELS WITH JALOUSIE

WINDOW SPECIFICATION
FOR WINDOWS 19b TO 19cALUMINUM FRAMED FIXED GLASS PANELS
WITH JALOUSIE

SPECIFICATIONS:

SHALL BE 6MM THICK, FIXED ANNEALED REFLECTIVE "SMOKE GREY" FIXED GLASS PANELS ON A MULLION TYPE ALUMINUM FRAMING SYSTEM IN POWDER-COATED FINISH WITH JALOUSIE TRANSOM MADE FROM 6MM THICK X 152MM WIDTH ANNEALED REFLECTIVE "SMOKE GREY" GLASS LOUVER BLADES. JALOUSIE FRAMING SHALL BE MADE FROM POLYPROPYLENE MECHANISM THAT WILL BREAK AND FLEXIBLE, WITH EPDM RUBBER FOR TIGHTER SEALING IN BETWEEN BLADES AND SINGLE CONTROL MECHANISM, COMPLETE WITH HARDWARE AND ACCESSORIES. FOLLOW MANUFACTURER'S STANDARD SIZES AND THICKNESS, SUBMIT POWDER COATING SWITCHES AND GLASS SAMPLE FOR ARCHITECTS' APPROVAL.



W 19c SCALE 1:50 VIEW

REQUIRED: 1 SET COMPLETE
LOCATION: 2ND FLOOR – MAIN STAIRS
NOTE: SEE OUTLINE SPECIFICATION FOR ALUMINUM FRAMED FIXED GLASS PANELS WITH JALOUSIE

A
A1 6f

SCHEDULE OF WINDOWS

SCALE

AS SHOWN

WINDOW TYPE

JALOUSIE WINDOW

ALUMINUM FRAMED FIXED GLASS PANELS
WITH JALOUSIE TRANSOM 1 AND 2




ALUMINUM FRAMED FIXED GLASS TRANSOM

JALOUSIE WINDOW

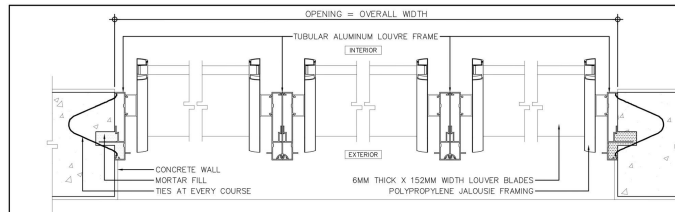
ALUMINUM FRAMED FIXED GLASS PANELS WITH JALOUSIE

TOTAL NUMBER OF WINDOWS

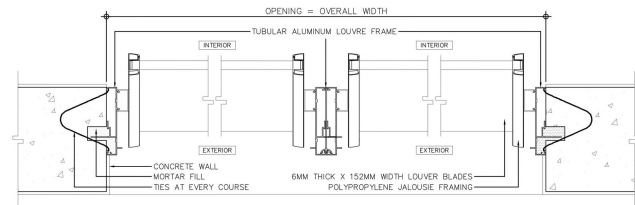
WINDOW NUMBER	GRD. FLR.	2ND FLR.	3RD FLR.	4TH FLR.	5TH FLR.	6TH FLR.	TOTAL
W-1A	0	0	0	0	1	0	1
W-1B	1	0	0	1	0	0	1
W-2A	4	0	0	0	0	0	4
W-2B	2	0	0	0	0	0	2
W-2C	2	0	0	0	0	0	2
W-3	1	0	0	0	0	0	1
W-4	1	4	0	0	0	0	5
W-5	4	14	0	0	0	0	18
W-6A	0	2	2	2	2	0	8
W-6B	0	2	1	2	1	2	8
W-7	0	11	12	11	6	2	42
W-8	0	5	5	6	1	0	17
W-9	0	4	4	4	4	1	17
W-10A	1	0	0	0	0	0	1
W-10B	0	10	17	17	11	1	56
W-11	0	8	14	14	8	0	44
W-12	2	4	0	0	0	0	6
W-13	0	0	8	8	0	0	16
W-14	0	0	2	2	0	0	4
W-15A	0	6	2	2	0	0	10
W-15B	2	0	0	0	0	0	2
W-15C	0	0	0	0	1	0	1
W-15D	0	1	0	1	4	4	10
W-15E	0	0	0	0	4	0	4
W-15F	1	5	1	1	0	0	8
W-16A	0	0	2	1	0	0	3
W-16B	0	1	1	1	0	0	3
W-16C	0	2	0	0	0	1	3
W-16D	0	1	4	4	0	0	9
W-16E	1	1	3	4	0	0	9
W-16F	0	2	10	6	0	0	18
W-17	0	0	1	0	0	0	1
W-18A	0	1	0	0	0	0	1
W-18B	0	1	0	0	0	0	1
W-19A	0	0	0	0	1	0	1
W-19B	0	0	1	1	0	0	2
W-19C	0	1	0	0	0	0	1
TOTAL NUMBER OF WINDOWS	22	86	90	87	44	11	340

CONSULTANT:	PRINCIPAL ARCHITECT:	DESIGN ARCHITECT:	PROJECT TITLE:	OWNER:	APPROVED BY:	SHEET CONTENTS:	REVISION:	PROJECT NO.:	SHEET NO.:
 ARCE•BAILON•ARCE ARCHITECTS•ENGINEERS•CONSULTANTS 14 SCOUT BORROWED STREET, SOUTH TRIANGLE, QUEZON CITY, TEL: 0917-343-871 FAX: 0917-343-871 www.arcebailonarce.com	 MARIANO S. ARCE, JR., FUPP	 MA. NINA B. ARCE, FUPP	CONSTRUCTION OF THE ACADEMIC BUILDING FOR SENIOR HIGH PROGRAM	 PHILIPPINE SCIENCE HIGH SCHOOL MAIN CAMPUS	 LAWRENCE V. MADRIGA BCO DIRECTOR II	SCHEDULE OF WINDOWS WINDOW SPECIFICATIONS TABLE OF WINDOW SCHEDULE	FEB 2022 -UPDATED TOTAL NO. OF DOORS	17-06	A1-6f
REG. NO. 4844 PTR. NO. 386567 DATE 04/01/17 GC TIN 129-343-871	REG. NO. 4970 PTR. NO. 386573 DATE 01/10/17 GC TIN 111-535-735	LOCATION: Agham Road, Diliman, Quezon City				DESIGNED BY: MSJA CAD: EJO CHECKED BY: MSJA DATE: APRIL 2018			

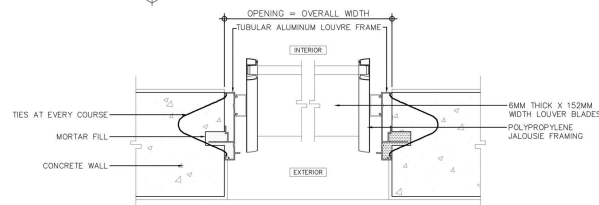
FOR BIDDING



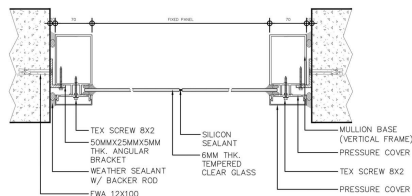
HORIZONTAL SECTION
3 TO 6 BAY JALOUSIE WINDOW
SCALE 1:5M



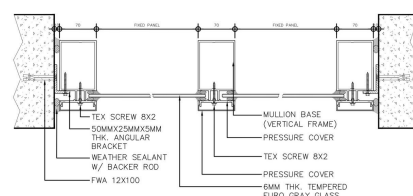
HORIZONTAL SECTION
2 BAY JALOUSIE WINDOW
SCALE 1:5M



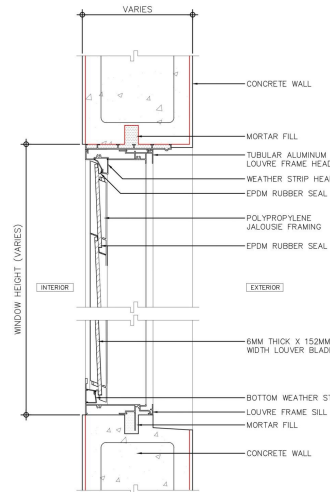
HORIZONTAL SECTION
1 BAY JALOUSIE WINDOW
SCALE 1:5M



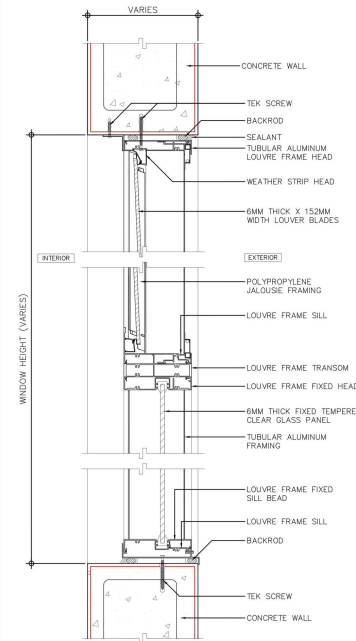
HORIZONTAL SECTION
1 BAY FIXED GLASS
SCALE 1:5M



HORIZONTAL SECTION
2 TO 6 BAY FIXED GLASS
SCALE 1:5M



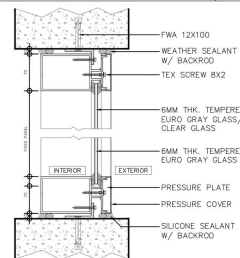
VERTICAL SECTION
4B JALOUSIE WINDOW
A1|6g SCALE 1:5M



VERTICAL SECTION
ALUMINUM FRAMED
FIXED GLASS PANELS
W/ JALOUSIE TRANSOM

C
A16g

SCALE 1:5M

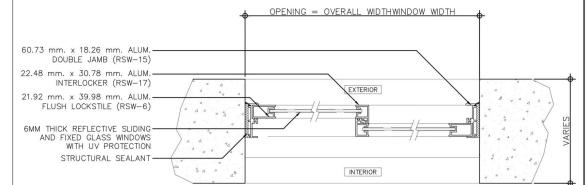


VERTICAL SECTION
FIXED GLASS
2D A16g SCALE 1:5M

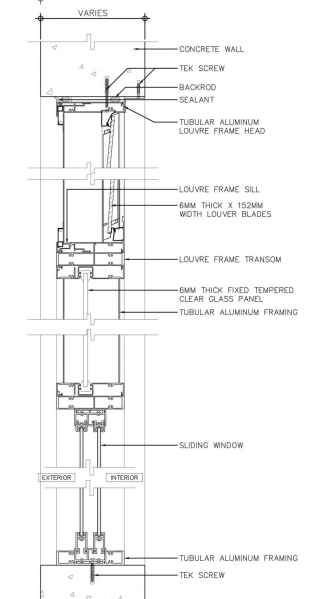
ALUMINUM FRAMED
FIXED GLASS TRANSOM

D
A1 6g

SCALE 1:5M



HORIZONTAL SECTION
SLIDING WINDOW
SCALE 1:5M








VERTICAL SECTION
ALUMINUM FIXED GLASS PANELS
SLIDING WINDOW WITH JALOUSIE TRANSOM
SCALE 1:5M

ALUMINUM FIXED GLASS PANELS
AND SLIDING WINDOW WITH JALOUSIE TRANSOM

D
A16g SCALE 1:5M

WINDOW CONNECTION DETAILS

CONSULTANT:		PRINCIPAL ARCHITECT:		DESIGN ARCHITECT:		PROJECT TITLE:		OWNER:		APPROVED BY:		SHEET CONTENTS:		REVISION:		PROJECT NO.:		SHEET NO.:	
 ARCE • BAILON • ARCE ARCHITECTS • ENGINEERS • CONSULTANTS 14 SCOUT BORMORADO STREET, SOUTH TRIANGLE, QUEZON CITY, TRINUKLINE - 352223 FAX NO. : 3351080 www.arcephilippines.com		 MARIANO S. ARCE, JR., fuop		 MA, NINA B. ARCE, fuop		CONSTRUCTION OF THE ACADEMIC BUILDING FOR SENIOR HIGH PROGRAM		 PHILIPPINE SCIENCE HIGH SCHOOL MAIN CAMPUS		 LAWRENCE Y. MADRIGA GDD DIRECTOR II		WINDOW CONNECTION DETAILS				17-06		A1-6g	
REG. NO. 0484 PFR NO. 300547 RL 139-34321 DATE 01/01/2011 REG. NO. 0484 PFR NO. 300547 RL 139-34321 DATE 01/01/2011		REG. NO. 0484 PFR NO. 300547 RL 139-34321 DATE 01/01/2011		REG. NO. 0484 PFR NO. 300547 RL 139-34321 DATE 01/01/2011		LOCATION: Agham Road, Diliman, Quezon City								DESIGNED BY: JMA CAD: JMA CHECKED BY: JMA DATE: APRIL 2018					