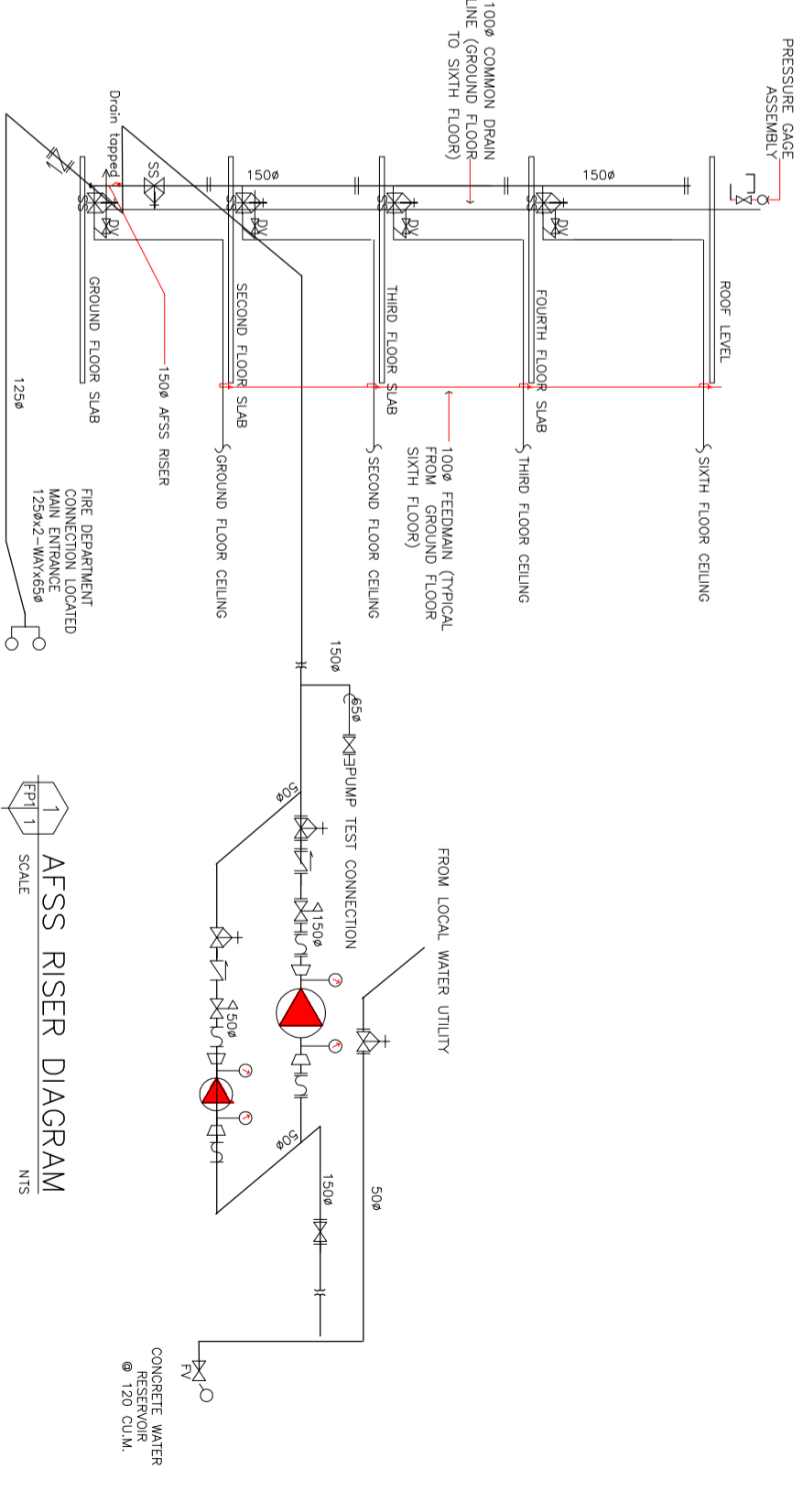
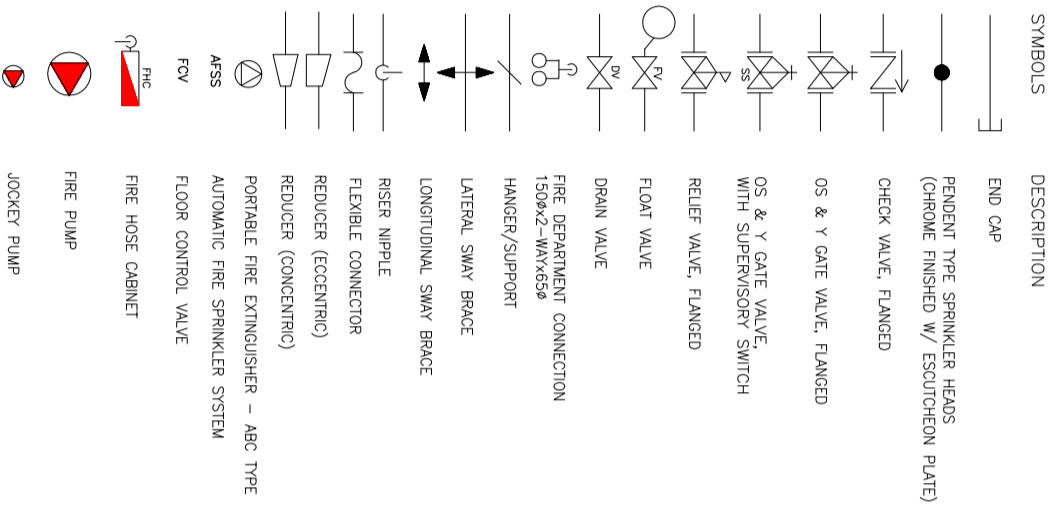


GENERAL NOTES:

- ALL WORKS SHALL BE EXECUTED IN ACCORDANCE TO THE PROVISIONS OF NFPA THE FIRE CODE OF THE PHILIPPINES AND THE NATIONAL FIRE CODE BY NFPA.
- THE WORK SHALL BE EXECUTED IN CLOSED COORDINATION WITH OTHER TRADES SO AS TO INSURE THE PROPER IMPLEMENTATION OF THIS PROJECT.
- THE CONTRACTOR SHALL BE FULLY RESPONSIBLE FOR THE EXACT LOCATION AND DIMENSIONS OF ALL REQUIRED WALL AND FLOOR OPENINGS.
- THE EXACT LOCATION OF ALL SPRINKLER HEADS SHALL BE COORDINATED WITH THE ARCHITECTS AND THE FIRE PROTECTION DESIGN ENGINEERS APPROVAL.
- LOCATION OF DRAIN PIPES AND OF THE BACK-UP SUPPLY LINES SHALL BE COORDINATED BY PLUMBING CONTRACTOR.
- LOCATION AND MOUNTING OF FIRE HOSE CABINETS SHALL BE COORDINATED WITH THE ARCHITECTURAL FINISHES AND SHALL BE SUBJECT TO BOTH THE ARCHITECTS AND FIRE PROTECTION DESIGN ENGINEERS APPROVAL.
- SIZE OF THE RISER NIPPLES SHALL CONFORM TO PIPE SCHEDULES
- PIPE SUPPORT, HANGERS AND BRACING SHALL BE OF APPROVED TYPE AND SHALL BE INDEPENDENT FORM CEILING AND DUCT SUPPORT.
- FP-1 AND JP-1 CIRCUIT BREAKER AND STARTERS INCLUDING THE POWER WIRING AND CONDUITING TAPPING FROM MAIN CIRCUIT BREAKER AT FIRE PUMP ROOM SHALL BE SUPPLIED AND INSTALLED BY FIRE PROTECTION CONTRACTOR.
- ALL WIRINGS TO MONITOR FLOW SWITCH IN THE FIRE ALARM PANEL SHALL BE SUPPLIED AND INSTALLED BY FIRE PROTECTION CONTRACTOR. THE DESIGNATED TERMINAL BLOCK IN THE ALARM PANEL.
- SHOP DRAWING SHALL BE PREPARED FOR THE FIRE PUMP LAYOUT PIPE HANGER AND OTHER INSTALLATION AS INDICATED IN THE SPECIFICATION.
- THE CONTRACTOR SHALL PROVIDE AND INSTALL 10 LBS. PORTABLE FIRE EXTINGUISHER IN FIRE HOSE CABINET. ALL PORTABLE FIRE EXTINGUISHERS SHALL BE LOCATED SO THAT ALL FIRE AT ANY POINT IN THE BUILDING CAN BE REACHED FROM ONE(1) EXTINGUISHER WITH A TRAVEL DISTANCE
- PROVIDE SECTIONALIZING AND FLOW SWITCHES FOR ALL ZONE CONNECTION
- PIPE SHALL BE OF SCHEDULE 40 & SHALL CONFORM TO ASTM OR ANSI/ASTM A-20 OR A-20.5 FOR PIPE SIZES LARGER THAN 50mm. THE SIZES SHALL BE 1/2" INCH ABOVE THE SCHEDULE SIZE 50mm & SMALLER SHALL BE TREATED WALKABLE IRON FITTINGS SHALL CONFORM
- PROVIDE UNION @ EACH THREADED OR WELDED CONNECTION TO EQUIPMENT & VALVES UP TO 50mm.
- VALVES RATING SHALL MEET OR EXCEED THEIR RESPECTIVE SYSTEM OPERATING PRESSURE AND TEMPERATURE. ALL VALVE SHALL BE LINE SIZE UNLESS OTHERWISE SPECIFIED.
- PIPE SHALL BE PAINTED W/ ONE(1) COAT PRIME & TWO(2)
- SPACING OF SPRINKLER & BRANCH LINE SHALL CONFORM TO THE DRAWINGS.
- A MINIMUM OF 50MM CLEARANCE SHALL BE PROVIDED AROUND PIPING, EXTENDED THROUGH WALL FLOORS, PLATFORMS & FOUNDATION, INCLUDING DRAINS & OTHER ADJUTLARY PIPING.
- JOINT COMPOUND OR TAPE SHALL BE APPLIED TO THE THREADS
- PIPE HANGER SHALL BE IN SUCH THAT COULD SUPPORT FIVE TIMES THE WEIGHT OF THE WATER FILLED PIPE PLUS 114KG @ EACH POINT OF
- MAXIMUM DISTANCE BETWEEN HANGERS SHALL NOT EXCEED 3.68M (12FT.) FOR 25mmø & 32mm OR 4.57(15FT.) FOR 38mmø &
- FIRE PROTECTION CONTRACTOR SHALL INDICATE LOCATION OF EXISTING DRY STANDPIPE, INCLUDING FIRE DEPARTMENT CONNECTION ON AS-BUILT PLANS.

LEGENDS & SYMBOLS

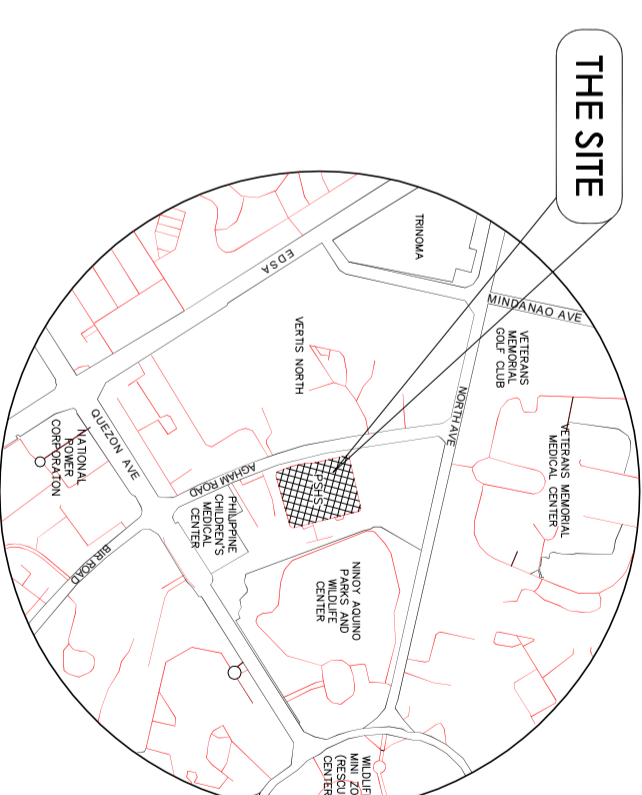


PUMP SCHEDULE

ITEM	QTY	LOCATION	DESCRIPTION	CAPACITY (GPM)	TOTAL DYNAMIC HEAD (M-H2O)	RPM	APPROX. MOTOR INPUT (KW)	RATING	REMARKS
FP-1	1	NEARBY	HORIZONTAL SPLIT CASE FIRE PUMP W/ CONTROLLER	500	133	3500	55.00	220V\1HP\60HZ	FIRE PUMP-CUT IN 60 PSI, CUT-OUT MANUAL
JP-1	1	WATER SOURCE	HORIZONTAL SPLIT CASE JOCKEY PUMP W/ CONTROLLER	20	105	3500	3.73	220V\1HP\60HZ	JOCKEY PUMP SHALL BE SET TO CUT-IN AT 80 PSI AND TO CUT-OFF AT 150 PSI

TABULATED COMPONENTS OF AFSS SYSTEM

FLOOR	QUANTITY OF PENDANT SPRINKLER HEADS	PORTABLE FIRE EXTINGUISHER (ABC TYPE, 4.5KG)	FIRE HOSE CABINET W/ PFE ABC, 4.5KG	SCHEDULE OF PIPE SIZES (LIGHT HAZARD OCCUPANCY)
GROUND FLOOR	150	8	2	2 S. HEADS - 25mm 3 S. HEADS - 30mm 5 S. HEADS - 38mm 10 S. HEADS - 50mm 275 S. HEADS & ABOVE - 150mm
SECOND FLOOR	150	8	2	30 S. HEADS - 65MM 60 S. HEADS - 75MM 100 S. HEADS - 100MM 165 S. HEADS - 125MM
THIRD FLOOR	170	8	2	
FOURTH FLOOR	38	4	2	



VICINITY MAP NOT TO SCALE

NOTE:
COMPLETE ROUGH-INS AND SPRINKLER HEADS AT ADMIN GROUND FLR, SECOND FLOOR AND EXPANSION GROUND FLR BUT ALL PUMPS ARE DEFERRED

LEGEND:
- - - - - DEFERRED ITEMS/
FOR NEXT PHASE

DESIGNED BY:	EMF
CHECKED BY:	BMP
DATE:	OCTOBER 2017

CONSULTANT:	PRINCIPAL ARCHITECT:	PROF. MECHANICAL ENGINEER:	PROJECT TITLE:	OWNER:	APPROVED BY:	SHEET CONTENTS:	REVISION:	PROJECT NO.:	SHEET NO.:
 ARCE•BAILON•ARCE ARCHITECTS•ENGINEERS•CONSULTANTS 14 SCOR BOROKEO STREET, SOUTH TRIANGLE, QUEZON CITY, TRINUKLINE, 3552232 FAX NO.: 3511800 WWW.ARCEBDRIBORICE.COM	MARIANO S. ARCE, JR., LUOP REG. NO. 6444 PIR. NO. 3845272 DATE: 01/07/17 QC	ERIC M. PANZO REG. NO. 2891 PIR. NO. 15376560 DATE: 01/24/17 QC	CONSTRUCTION OF THE ADMINISTRATIVE BUILDING AND REHABILITATION/EXPANSION OF ACADEMIC AND DORMITORY BUILDING Agrom Road, Dilimnon, Quezon City	 PHILIPPINE SCIENCE HIGH SCHOOL MAIN CAMPUS	VIRGINIA P. ANDRES DIRECTOR II	GENERAL NOTES LEGENDS & SYMBOLS SCHEDULE OF EQUIPMENT AFSS RISER DIAGRAM	17-05 17-07	FP0-1	

REPUBLIC ACT 9266: This drawing, as an instrument of service, is the property of ARCE•BAILON•ARCE ARCHITECTS, registered Architects and as such must not be reproduced or copied in part or in whole without their permission. All drawings are to be returned when no longer in use. PRESIDENTIAL DECREE NO. 46: Protection of Intellectual Property. Works of Art, Architecture, Model and Design are creative works and considered as part of the intellectual property of the author.